

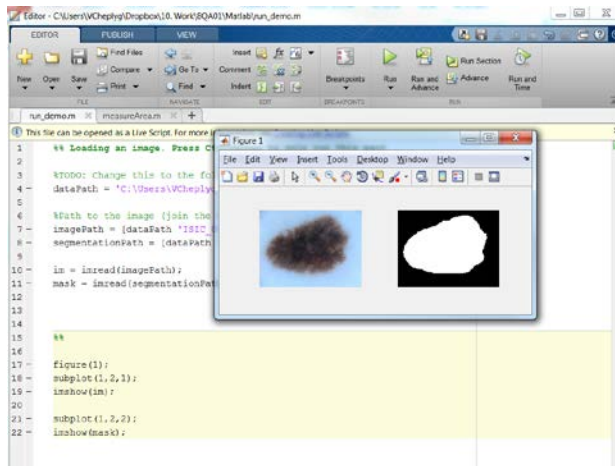
# Image analysis project for 1<sup>st</sup> year students

## Melanoma classification (ISIC challenge)



1. Measure features like "asymmetry" with algorithms

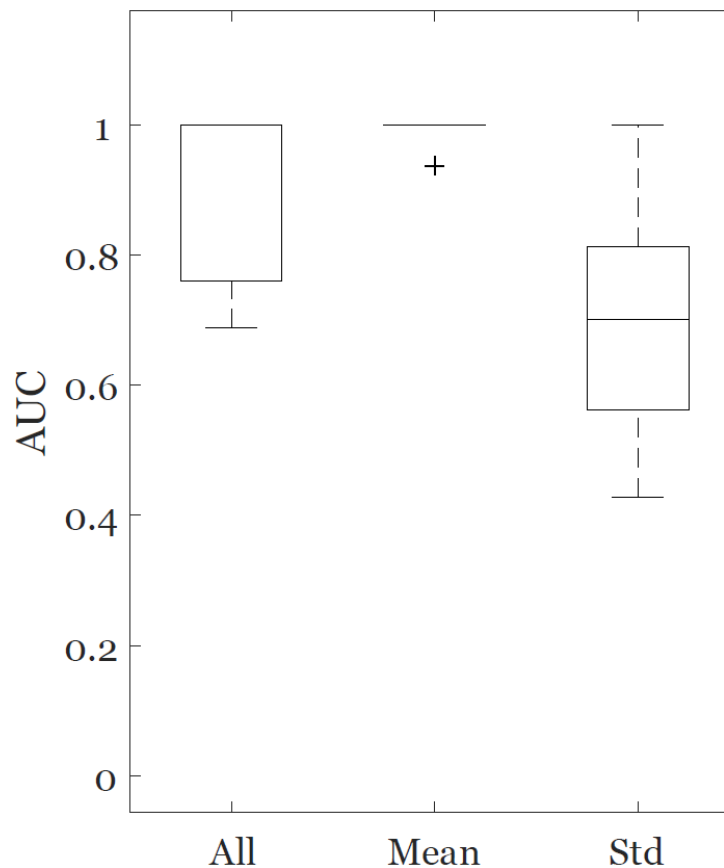
2. Measure features visually



	A	B	C	D
1	ID	Asymmetry_7_1	Color_7_1	Border_7_1
2	ISIC_0000549	2	4	1
3	ISIC_0000550	1	3	1
4	ISIC_0000551	2	2	1
5	ISIC_0000552	1	4	1
6	ISIC_0000554	2	3	1
7	ISIC_0000555	2	3	1
8	ISIC_0001100	2	5	1
9	ISIC_0001102	2	5	1
10	ISIC_0001103	1	5	1
11	ISIC_0001105	0	2	1
12	ISIC_0001118	2	5	1
13	ISIC_0001119	2	3	1
14	ISIC_0001126	2	2	1
15	ISIC_0001128	1	3	1
16	ISIC_0001131	1	5	1
17	ISIC_0001133	1	5	1
18	ISIC_0001134	2	3	1
19	ISIC_0001140	2	2	1
20	ISIC_0009923	1	2	1
21	ISIC_0009925	2	2	1
22	ISIC_0009929	1	2	1

# Crowd disagreement about medical images is informative

- Predict melanoma from mean scores is best
- Standard deviation - "disagreement" also informative



@vcheplygina



<http://www.veronikach.com>

